

Stambridge Parish Council Newsletter



MERRY CHRISTMAS MERRY CHRISTMAS MERRY CHRISTMAS MERRY CHRISTMAS Christmas 2015

New Partnership with Stambridge FC

In the past year, Stambridge Memorial Hall and Stambridge Football Club have forged a new partnership in supporting football within the community, which was signed on 1st October 2015. Stambridge Football Club can now focus on their football and return the management of the club building and grounds to Stambridge Memorial Hall.

This is a major milestone in the history of the football club and the community centre. We can trace back to before the 20th Century when Stambridge Football Club was established in 1888 by members of Rankin's Cricket Club and played on the field opposite the Cherry Tree. In the 1980's the club then moved to the Memorial Hall grounds.

In 1904 the Rankin family built a shed, with a corrugated roof, as a place for the farm workers to relax. Later on, it would become the Memorial Hall.

In March 1918, a group of local farmers clubbed together to buy what is now known as the Memorial Ground and gave it to the residents of Stambridge with the Parish Council as Trustees. After World War I, Harold Rankin built the front part of the Memorial Hall and dedicated it to the memory of the eleven Stambridge men who lost their lives in the war. In 1945, Harold Rankin commissioned a stone mason to include the lives lost in World War II.



Salt Bins

Salt Bins are located at the Royal Oak, Stambridge Church, The Cherry Tree, Cagefield Road and Hampton Barns. If you don't live near any of these and need salt, please contact the Parish Clerk on 07502 226819 or 01702 258566. In the event of roads in the parish being impassable, please contact Essex County Council on 0845-603-7631.

Lights and Highways

The Parish council is still managing to keep the lights on at night even though many other parts of Essex are having theirs turned off between midnight and 5am. We think they are necessary for your safety.

Please report any problems with street lights, potholes and other road issues to the Clerk, together with any information such as pole number, street name or any other details.

Stambridge Traffic Update

Because of traffic speeding through the village and along Stambridge Road, your district Councillor, George Ioannou, has registered a report to the Highways county panel to conduct a surveillance of the area and it is now being conducted. A number of residents have already been trained to use the speed gun and they are checking drivers' speeds in various parts of the parish.

Another training session is being arranged and if you would like to join (it is only one session of 2 hours) please contact the Memorial Hall Manager on 07876802420, 01702 258566 or by email: memorialhall@stambridgepc.co.uk

Remembrance Day in Stambridge.



Remembrance Day was only last month so this may be a good time to remind you that, every year, we lay a wreath at the Memorial Hall in honour of the men of Stambridge who died in the two World Wars.

FLOOD!

On the night of Saturday 31 January 1953 there was flooding in Stambridge and several people died. An exceptionally high spring tide coincided with very strong on-shore winds and the resulting tidal surge caused great devastation all along the east coast. It came without warning in the middle of the night, long after radio and television closed down. By the time it was realised what was happening it was too late to do anything.

On 5 December 2013 it nearly happened again. This time the surge was even higher but at least we had been warned. The parish website was updated about every half-hour as the Environment Agency revised its estimates in the light of the changing weather.

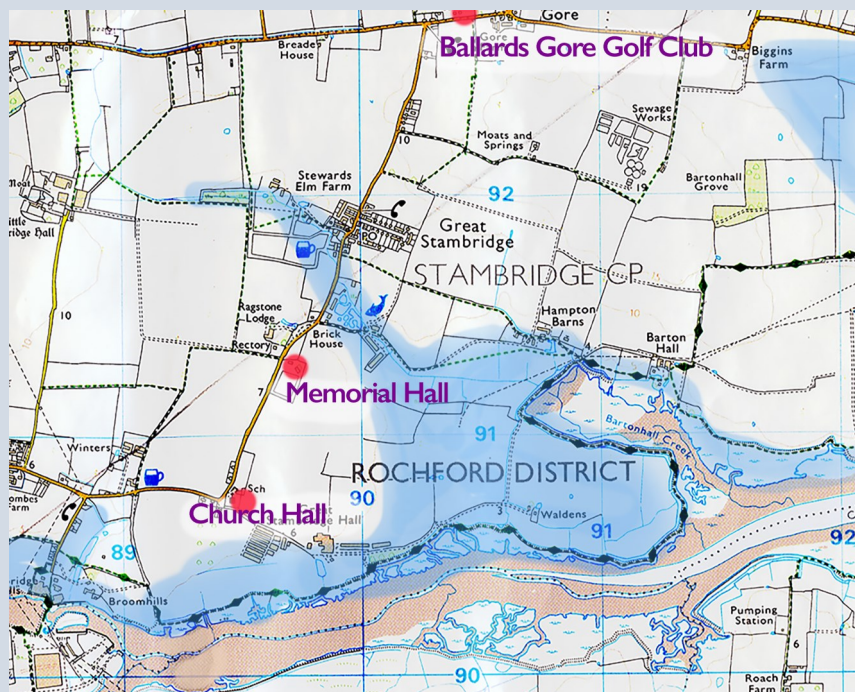
In some areas, sea walls were breached more than two hours before high tide and thousands of people were evacuated from their homes. In Stambridge, however, we were lucky. The sea defences had been strengthened since 1953 and they held.

The chances are that eventually it will happen again and there can be no guarantee that the sea defences will always hold. Weather forecasting has improved tremendously so we will have advance warning that serious flooding is a possibility. It is possible to estimate where flooding could occur and, as the map shows, the most vulnerable areas are the middle of Great Stambridge and Mill Lane. If you are in a house you might be tempted to just go upstairs but in 1953 some people had to go up into their attics. If you can, it would be better to get out and move to higher land. There are three places in Stambridge that will be opened to provide a refuge until the waters subside.

They are Ballards Gore Golf Club, north of the village

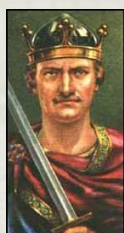
The Memorial Hall, south of the village

The Church Hall, which is nearer Mill Lane.



Did You Know?

Stambridge originally consisted of two parishes: Great Stambridge and Little Stambridge. Each had its own stone church built about 1020-40. Great Stambridge may have had a wooden church before that.



Both Great and Little Stambridge are mentioned in the Domesday Book which was compiled by order of William the Conqueror to calculate the taxable value of the country. The picture of Stambridge it gives is of four small settlements in the Essex forest, each grouped round its manor house, very largely cut off from the rest of the world.

Barton Hall or Bartons, once a mediaeval mansion, now long since demolished, stood at the extreme eastern end of Great Stambridge parish, overlooking the water on an arm of Bartonhall Creek.

Pat Rankin: 1928 - 2015

Pat Rankin was educated at Sunningdale, a traditional boy's boarding prep school in Surrey, followed by Eton. He served in the army, and then trained as a miller.

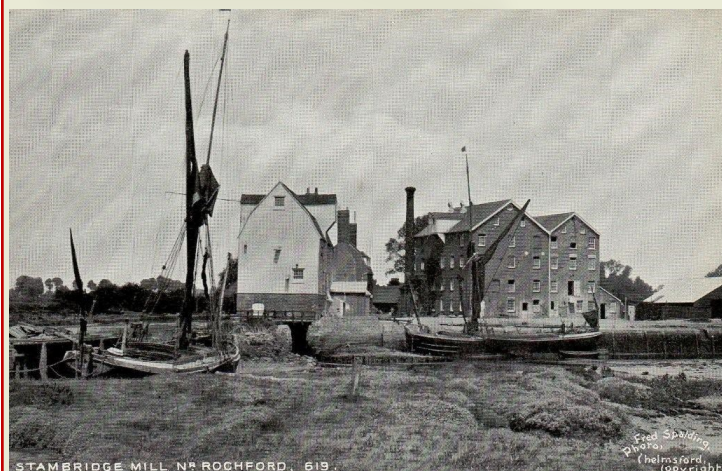
After Stambridge mill was sold in 1961, he joined Allied Mills and later moved to the London office to take over the wheat-buying policy for the group.

He was instrumental in setting up Allied Grain in the late 80's, which has since gone on to become one of the largest agricultural merchants in the country.

Patrick was a keen sportsman. As president of Rankins Cricket Club he gave generously to support the recent development of a second pitch and a renovated pavilion. He was an excellent golfer and was president of the London Corn Exchange golfing society for 11 years.

Photos of Old Rochford and Stambridge

Rochford District Community Archive is now a well established internet accessed collection of memories and photographs. Although they have a lot of interesting information about life in the past in our District, they are always in need of more contributions. In addition, they are also in need of more help as it is a very small, friendly group of volunteers. They work together to put on displays



of their material to publicise their website and attract more articles. Please have a look at your Community Archive and contact them if you would like to help in any way. The web address is www.rdca.org.uk if you can just Google Rochford Archive and you will get straight to the site; it is easy to use and we are sure you will find something of interest to you.

Dance School at the Memorial Hall

Elevation Dance Studios is a new local dance school providing weekly dance classes in Ballet, Tap & Modern. Classes are available for ages 2+ and are structured using the International Dance Teachers Association (IDTA) syllabus. No dance experience needed – all classes are perfect for beginners and are a great way to boost confidence and make new friends, whilst having fun!

Weekly Dance Classes:

Wednesdays @ Clements Hall Leisure Centre – Ages 4-8

Sundays @ Stambridge Memorial Hall – Ages 2+

First lesson free!

Prices start from as little as £3 per class.

For more information or to book your child in to their first free lesson, please contact 07834 466543.



Elevation
Dance Studios

'Taking our dancers to the next level'

Principal Miss Parisa Aram AIDTA, BA(Hons)
07834466543
elevationdancestudios@hotmail.com
elevationdancestudios.co.uk

TALKING NEWSPAPERS for the BLIND

Do you know someone who is blind, partially sighted or simply finds it difficult to read a newspaper? Then Talking Newspapers for the Blind can help.

It's relatively easy for those with sight problems to access national and international news simply by switching on the TV or radio. But it's not always easy to find out about *local* news and events. That's where we come in – we make audio recordings of news, views, information, events and articles for people with sight problems in Rayleigh, Rochford and Castle Point.

This is a free service and there is no need to be registered as sight-impaired.

The recordings are made on USB memory sticks which arrive by post in padded wallets, every fortnight, with Freepost return labels. If you don't have a player of your own, we can provide one for you and show you how to use it.

When you've finished listening, just drop the memory stick into the wallet, turn over the label and send it back to us. It couldn't be easier.

If you, or someone you know, would like to receive our service, or want more information about what we do, please telephone:

Janet Berry (Chairman) 01702 541410

Ann Willis (Secretary) 01702 205169

Footpaths

There is a network of public footpaths throughout the Parish. Some bridges have been replaced and signage has been improved. Do please continue to let the parish clerk know of any problems.

Allotments

We have 26 allotments of which two are currently vacant and if you would like one, please contact the Parish Clerk at the Memorial Hall or email clerk@stambridgepc.co.uk. New padlocks have now been fitted and this should improve security.

Free Disability Sports Sessions

This year has seen residents from around Rochford District, local care homes, MenCap and Age UK participate in the Disability Sports sessions.

The sessions are held every Friday afternoon at the newly renovated Stambridge Memorial Hall from 1430 until 1700. All ages and abilities are welcome to come along and try Boccia, table cricket and other sports and activities.

Many thanks goes to Nick Evans who is the Manager of the Rochford Co-operative for providing refreshments and offering to provide capital support and volunteers.

There is no need to book but for more information, phone 07876 802420, 01702 258566 or email: memorialhall@stambridgepc.co.uk

Stambridge Fisheries Programme

Stambridge Memorial Hall, All About Course Angling, Youth Services, PCC and Local Schools have come together to deliver and support an accredited angling Programme to young people. The four unit Stambridge Fishing Programme will commence in early 2016 with referrals coming from the schools, PCC, Youth Services and St Marks Rochford.

The youngsters will be taking part in theory and practical sessions working towards an Angling qualification

To find out more:

Email: Community@StambridgePC.co.uk.

Write: FAO Mr George Ioannou, Stambridge Memorial Hall, Stambridge Road, Stambridge, SS4-2AR.

Mini Marvels Pre School

Mini Marvels Pre School runs daily during term time at Stambridge Memorial Hall. They have a dedicated team of Early Years Educators who hold a minimum of Level 2 childcare qualifications and are firmly committed to offering ALL children from the age of 2yrs up to school age a happy, stimulating and safe environment. This in turn supports the children in learning effectively through play with adult support to guide and enhance their development in all areas of the Early Years Foundation Stages.

The preschool meets Monday to Friday between 9.15am and 12.15pm and Monday to Thursday between 1.30pm and 4.30pm during term time and offers an optional lunch club from 12.30 to 1.15 Monday to Thursday at an additional cost of £4.00 per day.

They are excited to report that Mrs Avril Gordon has joined them as their new Supervisor and will be now be responsible for the day to day running of the preschool. Avril joins with a wealth of knowledge and expertise and they are looking forward to this exciting new chapter.

What's On

Community Forum

The Community Forum is open to anyone who is interested in making Stambridge more of a community. Meetings are advertised on the Stambridge Community Facebook page. Tel: 07721-454108

Stambridge Football Club

The club are currently members of Division Three of the Essex Olympian League and play at the Stambridge Memorial Ground.

Rankin's Cricket Club

This very active club has several events every week in the summer. They are listed on their website www.rankins.hitscricket.com

St. Mary's and All Saints, Church

Stambridge Road.
Services are held every Sunday morning at 11.00 am.
Tel: 01702 544333

Disability Sports

Every Friday 2.30-5.00pm at the Memorial Hall.
For more information, phone 07876 802420, 01702 258566 or email: memorialhall@stambridgepc.co.uk

The Cherry Tree

Stambridge Road, near Mill Lane. The pub is open daily 12 noon - 12 midnight
Telephone: 01702 543173

Elevation Dance School

Classes in Ballet, Tap & Modern for ages 2+ – Ages 4-8
Sundays @ Stambridge Memorial Hall – Ages 2+
Contact 07834 466543.

Mini Marvels

Held at the Memorial Hall, Stambridge Road. Sessions are:
Mon-Thur: 9.15 am to 4.30 pm
Fri: 9.15 am to 12.30 pm
For more information on what they offer, telephone 07981 967604

The Royal Oak

In the centre of Gt. Stambridge
Open all day, everyday 11 am to late
Tel: 01702 258259

Wednesday Friends' Club

is held at the Stambridge Church Hall between 10-4pm. This is for anyone who wishes to share in a cup of tea and something to eat and it is an active weekly community event.

Stambridge Fisheries

Stambridge Road, Gt. Stambridge, Rochford, SS4 2AR. Open 24hrs a day, 365 days a year. £5 a rod per day.
Tel: 01702 258 274.

Stambridge Fisheries Programme

To find out more about this rolling programme for youngsters, email:

community@stambridgepc.co.uk.

The Parish Council Website

is at www.essexinfo.net/stambridgeparishcouncil. or you can google 'Stambridge parish'.

There is also a **Stambridge Community Group Facebook page**. Go to Facebook and search for Stambridge Community.

Who to Contact

Stambridge Parish Contacts

Parish Clerk

Linda Hare
Stambridge Parish Council
Stambridge Memorial Hall
Stambridge Road
Stambridge
SS4 2AR
Tel: 07502 226819, 01702 258566
Email: clerk@stambridgepc.co.uk

Memorial Hall Manager

Sarah Ioannou
Stambridge Memorial Hall
Stambridge Road
Stambridge
SS4 2AR
Tel: 07876 802420, 01702 258566
Email: Memorialhall@stambridgepc.co.uk

Councillors

Clr George Ioannou,
BSc.MBA. (Chairman)
Mob. 07721-454108
Clr_GeorgeIoannou@Hotmail.co.uk
Peter Perkins (Vice-Chairman)
mahljah@live.co.uk
Clr Denise Vanderson
denisevanderson@sky.com
Clr Bernard Crix
bernardcrix@uwclub.net
Clr Daniel Nelson
daniel@neltec.co.uk

District and County Councillors

Rochford District Council

[Terry Cutmore](mailto:Terry.Cutmore)
"Hailwood", 9 Highcliff Crescent,
Ashingdon, SS4 3HN. 01702 544511
Email: Clr.terry.cutmore@rochford.gov.uk
[George Ioannou](mailto:George.ioannou)
Windsor, Little Stambridge Hall Lane,
Rochford, Essex SS4 1EN.
Mob: 07721-454108
Email: ClrGeorge.ioannou@Rochford.gov.uk

Essex County Council

Our Councillor is
[Terry Cutmore](mailto:Terry.Cutmore)
Contact details as above.

Member of Parliament :

Mark Francois

is the MP for our constituency (**Rayleigh and Wickford**). You can **write** to him at:
Rt Hon Mark Francois MP
House of Commons
London SW1A 0AA

Citizens Advice Bureau (CAB),

Is a charity which can be used by all of our community. You can contact the Bureau on 03444 770808 or at www.adviceguide.org.uk, www.rochfordcab.org.uk.
for advice and volunteering opportunities.



Chemist	Co-op Pharmacy (Rochford) Golden Cross Pharmacy (Ashingdon) Nutan Pharmacy (Ashingdon) Rochford Pharmacy (Rochford)	01702 544162 01702 544104 01702 548452 01702 542700	Library	Rochford Library Hullbridge Library Home Library Service	01702 546688 01702 230868 0845 603 7628
Doctors	Riverside Medical Centre (Hullbridge) Puzey Family Practice (Rochford) Rochford Medical Centre (Rochford) Ashingdon Medical Centre (Ashingdon) The Practice (Ashingdon) Dr B Singh (Canewdon)	01702 230555 01702 533740 0845 408 1299 0844 4778674 01702 547828 01702 258777	Police	In an emergency dial 999 Essex Police non-emergency enquiries NHW-Voluntary Services	999 101 01268 770519
Churches	Ashingdon St Andrews Ashingdon Elim Ashingdon United Free Church Hawkwell Baptist Church Hullbridge Free Church Rochford Congregational Rochford Community Church Rochford Methodist Church St Andrews Rochford St Teresas R.C. Church Rochford St. Mary's and All Saints, Stambridge	01702 549318 01702 548438 01702 540639 01702 542000 01702 233164 01702 546576 01702 545633 01268 770333 01702 530621 01702 544334 01702 544333	Schools	Ashingdon School Greensward Academy Holt Farm Infant School Holt Farm Junior School Riverside Primary School Rochford Primary & Nursery School St Teresa's Catholic Primary School Stambridge Primary School The King Edmund School Waterman Primary School Mini Marvels	01702 202857 01702 202571 01702 544058 01702 545131 01702 230911 01702 544342 01702 547918 01702 544369 01702 545771 01702 546237 07981 967604
Local Gov	Essex County Council Stambridge Parish Council	08457 430430 07502 226819	CAB	Citizens Advice Bureau	03444 770808
Helplines	Age UK Info & Advice Alcoholics Anonymous Childline Citizens Advice Bureau National Debtline NHS	0800 169 656 0845 769 7555 0800 1111 0844 4770808 0808 800 4000 111	Helplines	National Drugs Freephone RSPCA Samaritans Shelter Victim Support line	0800 776900 0300 1234 999 01702 611911 0808 800 4444 0845 3030 900